



10, Coleham Row, Coleham, Shrewsbury, SY3 7EQ
£750 Per Month



10, Coleham Row, Coleham, Shrewsbury, SY3 7EQ

£750 Per Month

VIRTUAL TOUR AVAILABLE - Redecorated, spacious three bedroom flat in Longden Coleham, with excellent access to a variety of local amenities, the Quarry Park and just a short walk to Shrewsbury town centre.

Available: 31/08/24

Description

Comprising: Entrance hall with large under stairs storage with shelving and light. Stairs to landing, large airing cupboard with radiator, spacious living dining with bay window overlooking the side and front of the property and onto Longden Coleham, kitchen with freestanding oven with gas hob, freestanding fridge freezer and space for washing machine, pantry cupboard with boiler, primary double bedroom, two further bedrooms, bathroom with shower over bath. Communal lawn and parking. Gas Central Heating. Double glazing. EPC C



Unfurnished

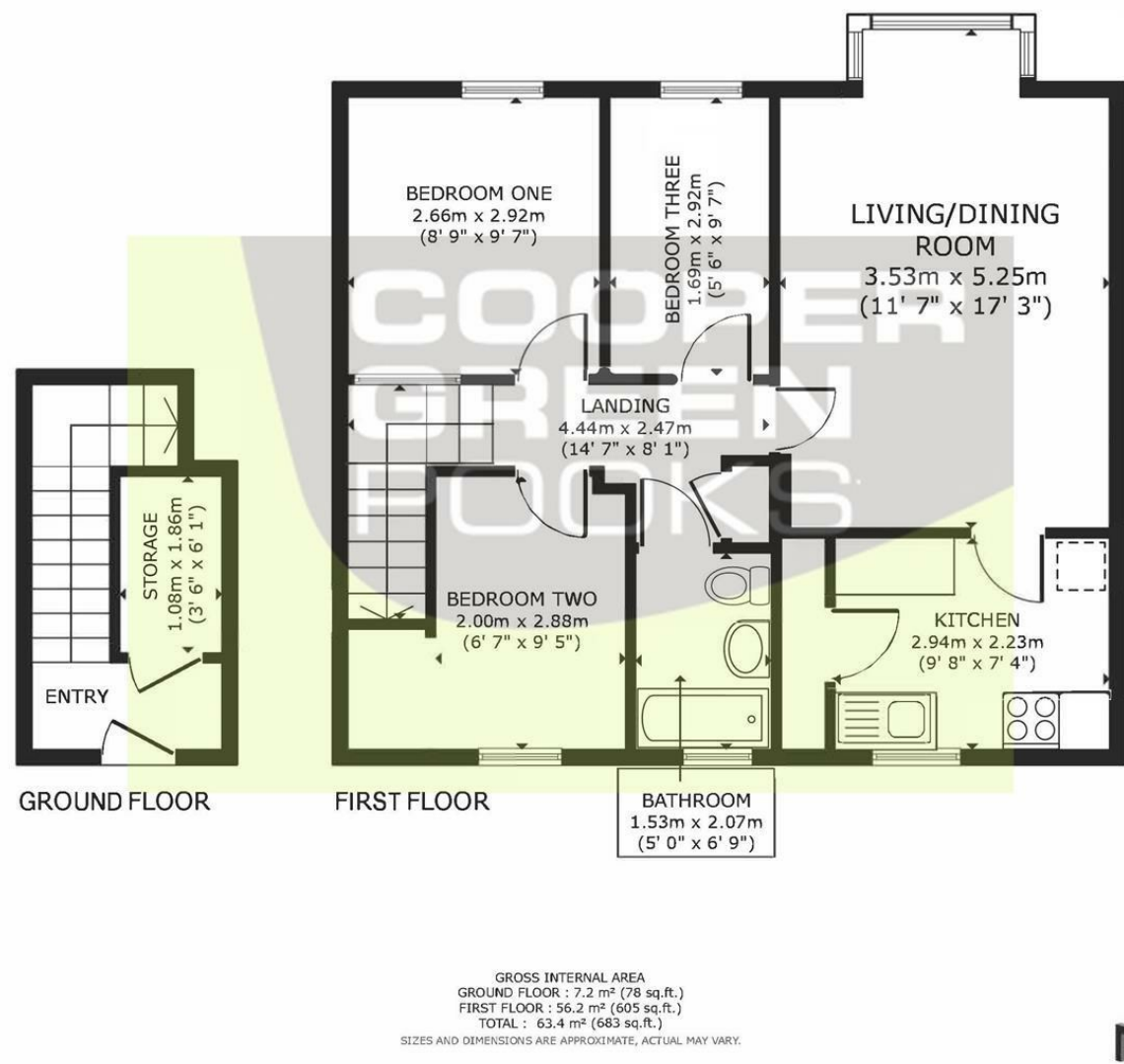
Council Tax Band: A

Available: 31st August 2024

EPC: C



Floor Plans



These particulars, whilst believed to be accurate are set out as a general outline only for guidance and do not constitute any part of an offer or contract. Intending purchasers should not rely on them as statements of representation of fact, but must satisfy themselves by inspection or otherwise as to their accuracy. No person in this firms employment has the authority to make or give any representation or warranty in respect of the property.